

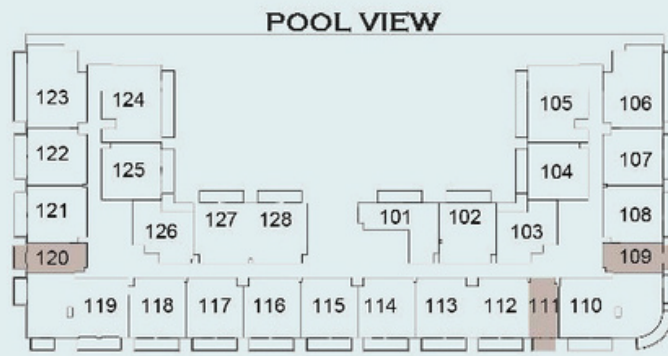
The image shows a modern, multi-story building with a distinctive architectural style. The building features a series of cantilevered balconies or terraces that create a rhythmic, stepped pattern. The facade is primarily glass and light-colored panels. The title 'Emerald Vision Tower Pricing Plan' is overlaid in a large, black, serif font, centered on the building's facade. The background is a soft, light blue gradient.

# Emerald Vision Tower Pricing Plan



# Studio Apartment Pricing Plan

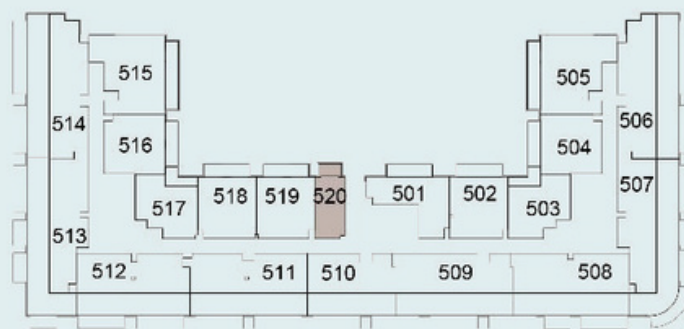




**1ST FLOOR LAYOUT**



**TYPICAL 2ND -4TH FLOOR LAYOUT**



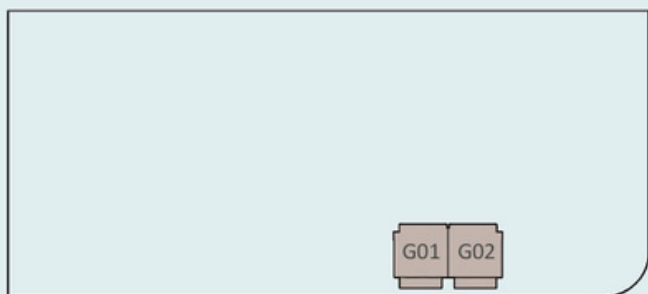
**FIFTH FLOOR LAYOUT**

UNIT No.	FLOOR	ROOMS	TYPE	VIEW	APT AREA	BALCONY AREA	TOTAL AREA
109	1	STD	STUDIO A	SIDE	350	58	408.00
111	1	STD	STUDIO A	VILLA	357	58	415.00
120	1	STD	STUDIO A	COMMUNITY	377	58	435.00
209	2	STD	STUDIO A	SIDE	350	57	407.00
220	2	STD	STUDIO A	VILLA	377	58	435.00
309	3	STD	STUDIO A	SIDE	350	57	407.00
329	3	STD	STUDIO A	POOL	360	58	418.00
409	4	STD	STUDIO A	SIDE	350	57	407.00
429	4	STD	STUDIO A	POOL	360	58	418.00

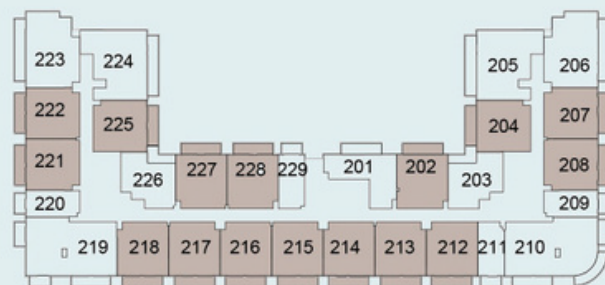


# 1 BR Apartment Pricing Plan

POOL VIEW



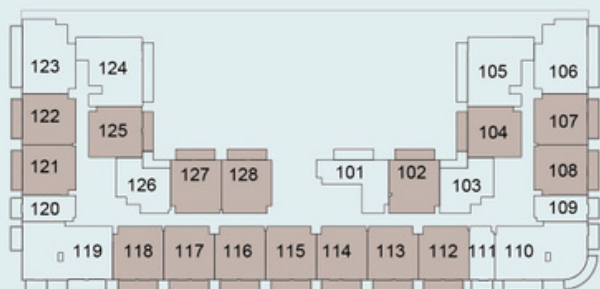
GROUND FLOOR LAYOUT



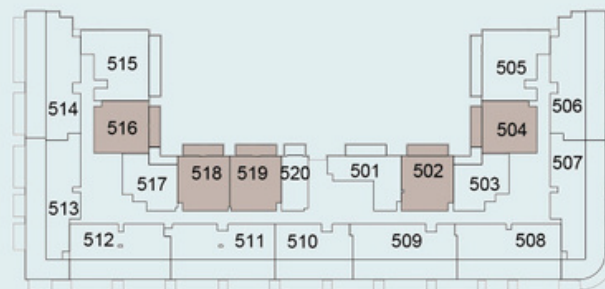
TYP. 2ND -4TH FLOOR LAYOUT

COMMUNITY VIEW

SIDE VIEW



1ST FLOOR LAYOUT



FIFTH FLOOR LAYOUT

VILLA VIEW

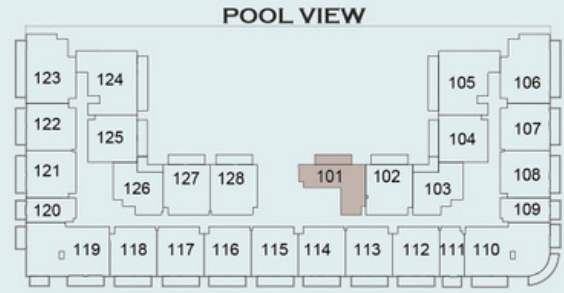
UNIT No.	FLOOR	ROOMS	TYPE	VIEW	APT AREA	BALCONY AREA	TOTAL AREA
102	1	1	1 BHK A	POOL	696	111	807.00
104	1	1	1 BHK A	POOL	700	111	811.00
107	1	1	1 BHK A	SIDE	679	110	789.00
108	1	1	1 BHK A	SIDE	672	110	782.00
112	1	1	1 BHK A	VILLA	696	111	807.00
113	1	1	1 BHK A	VILLA	695	110	806.00
114	1	1	1 BHK A	VILLA	695	111	805.00
115	1	1	1 BHK A	VILLA	695	110	806.00
116	1	1	1 BHK A	VILLA	695	110	806.00
117	1	1	1 BHK A	VILLA	695	111	806.00
118	1	1	1 BHK A	VILLA	695	111	806.00
121	1	1	1 BHK A	COMMUNITY	715	110	825.00
122	1	1	1 BHK A	COMMUNITY	708	110	818.00
125	1	1	1 BHK A	POOL	699	110	809.00
127	1	1	1 BHK A	POOL	695	110	806.00
128	1	1	1 BHK A	POOL	691	110	802.00
204	2	1	1 BHK A	POOL	700	111	810.00
207	2	1	1 BHK A	SIDE	681	110	791.00
208	2	1	1 BHK A	SIDE	672	110	782.00
212	2	1	1 BHK A	VILLA	696	111	807.00
213	2	1	1 BHK A	VILLA	695	110	806.00

UNIT No.	FLOOR	ROOMS	TYPE	VIEW	APT AREA	BALCONY AREA	TOTAL AREA
214	2	1	1 BHK A	VILLA	695	111	805.00
216	2	1	1 BHK A	VILLA	695	110	805.00
218	2	1	1 BHK A	VILLA	695	111	806.00
221	2	1	1 BHK A	COMMUNITY	715	110	825.00
222	2	1	1 BHK A	COMMUNITY	708	110	818.00
227	2	1	1 BHK A	POOL	695	110	805.00
228	2	1	1 BHK A	POOL	691	110	802.00
302	3	1	1 BHK A	POOL	696	111	807.00
304	3	1	1 BHK A	POOL	700	111	810.00
307	3	1	1 BHK A	SIDE	681	110	791.00
308	3	1	1 BHK A	SIDE	672	110	782.00
312	3	1	1 BHK A	VILLA	696	111	807.00
313	3	1	1 BHK A	VILLA	695	110	806.00
314	3	1	1 BHK A	VILLA	695	111	805.00
315	3	1	1 BHK A	VILLA	695	110	806.00
316	3	1	1 BHK A	VILLA	695	110	805.00
318	3	1	1 BHK A	VILLA	695	111	806.00
321	3	1	1 BHK A	COMMUNITY	715	110	825.00
322	3	1	1 BHK A	COMMUNITY	708	110	818.00
325	3	1	1 BHK A	POOL	699	110	809.00
327	3	1	1 BHK A	POOL	695	110	805.00
328	3	1	1 BHK A	POOL	691	110	802.00
402	4	1	1 BHK A	POOL	696	111	807.00
404	4	1	1 BHK A	POOL	700	111	810.00
407	4	1	1 BHK A	SIDE	681	110	791.00
408	4	1	1 BHK A	SIDE	672	110	782.00
412	4	1	1 BHK A	VILLA	696	111	807.00
413	4	1	1 BHK A	VILLA	695	110	806.00
414	4	1	1 BHK A	VILLA	695	111	805.00
415	4	1	1 BHK A	VILLA	695	110	806.00
416	4	1	1 BHK A	VILLA	695	110	805.00
418	4	1	1 BHK A	VILLA	695	111	806.00
421	4	1	1 BHK A	COMMUNITY	715	110	825.00
422	4	1	1 BHK A	COMMUNITY	708	110	818.00
425	4	1	1 BHK A	POOL	699	110	809.00
427	4	1	1 BHK A	POOL	695	110	805.00
428	4	1	1 BHK A	POOL	691	110	802.00



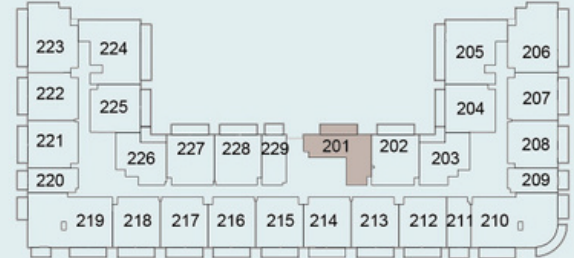


# 1 BR Apartment Pricing Plan



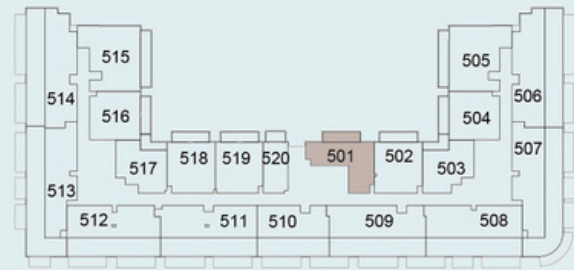
**1ST FLOOR LAYOUT**

COMMUNITY VIEW



**TYPICAL 2ND -4TH FLOOR LAYOUT**

SIDE VIEW

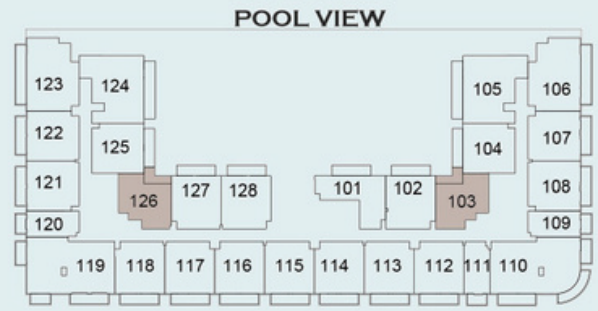


**VILLA VIEW**  
**FIFTH FLOOR LAYOUT**

UNIT No.	FLOOR	ROOMS	TYPE	VIEW	APT AREA	BALCONY AREA	TOTAL AREA
101	1	1	1 BHK B	POOL	639	111	750.00
201	2	1	1 BHK B	POOL	639	111	750.00
301	3	1	1 BHK B	POOL	639	111	750.00
401	4	1	1 BHK B	POOL	639	111	750.00

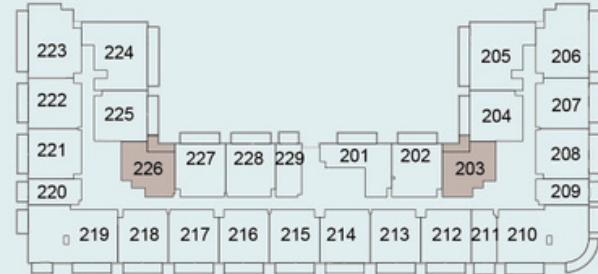


# 1 BR Apartment Pricing Plan



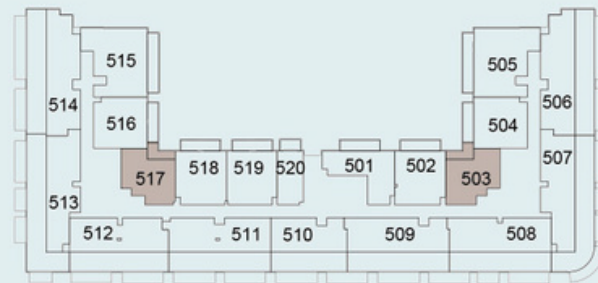
**1ST FLOOR LAYOUT**

COMMUNITY VIEW



**TYPICAL 2ND -4TH FLOOR LAYOUT**

SIDE VIEW



**VILLA VIEW**  
**FIFTH FLOOR LAYOUT**

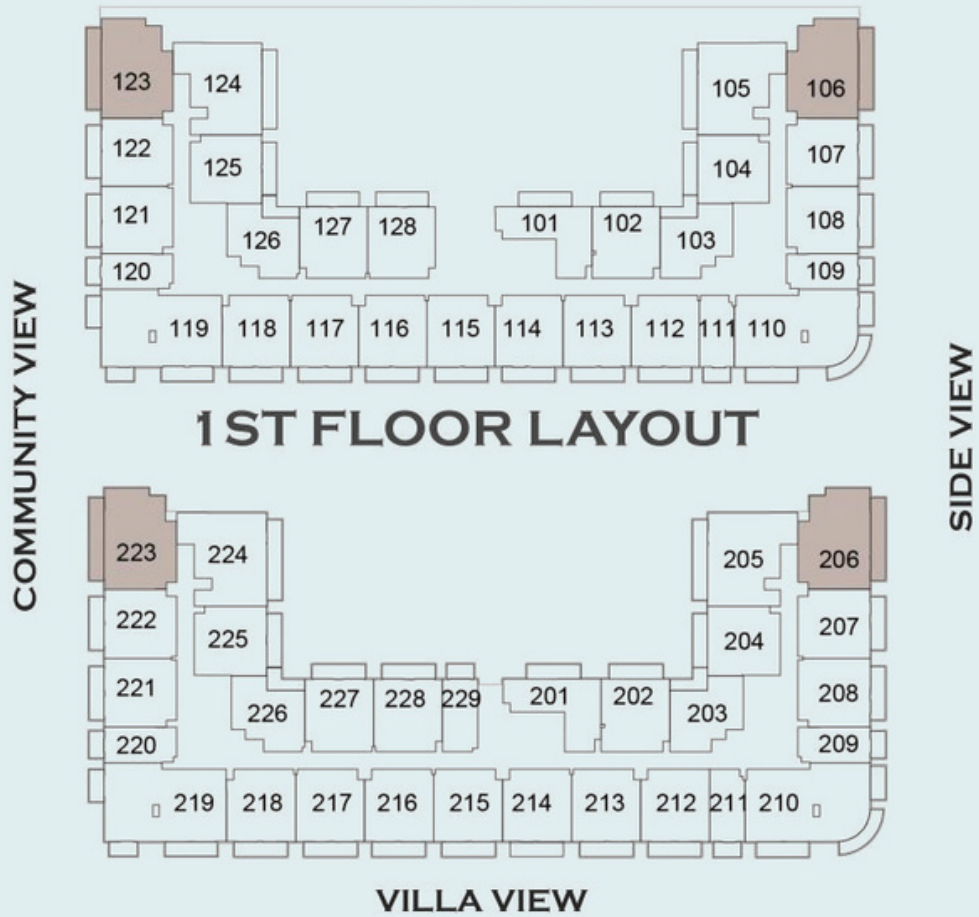
UNIT No.	FLOOR	ROOMS	TYPE	VIEW	APT AREA	BALCON Y AREA	TOTAL AREA
103	1	1	1 BHK C	POOL	629	84	713.00
126	1	1	1 BHK C	POOL	632	85	717.00
203	2	1	1 BHK C	POOL	629	84	713.00
226	2	1	1 BHK C	POOL	631	85	716.00
303	3	1	1 BHK C	POOL	629	84	713.00
326	3	1	1 BHK C	POOL	631	85	716.00
403	4	1	1 BHK C	POOL	629	84	713.00
426	4	1	1 BHK C	POOL	631	84	715.00



## 2 BR Apartment Pricing Plan



**POOL VIEW**



**TYPICAL 2ND -4TH FLOOR LAYOUT**

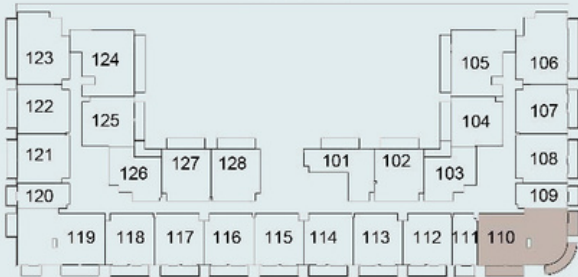
UNIT No.	FLOOR	ROOMS	TYPE	VIEW	APT AREA	BALCONY AREA	TOTAL AREA
106	1	2	2 BHK A	SIDE	951	177	1,128.00
123	1	2	2 BHK A	COMMUNITY	969	177	1,146.00
206	2	2	2 BHK A	SIDE	949	177	1,125.00
223	2	2	2 BHK A	COMMUNITY	969	177	1,146.00
323	3	2	2 BHK A	COMMUNITY	969	177	1,146.00
406	4	2	2 BHK A	SIDE	949	177	1,125.00
423	4	2	2 BHK A	COMMUNITY	969	177	1,146.00





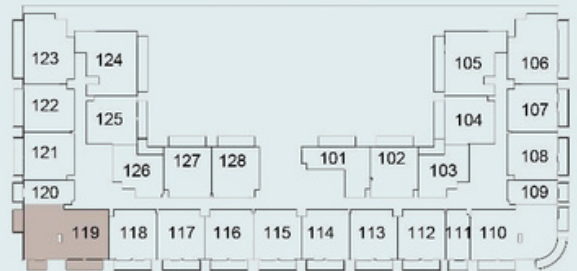
# 3 BR Apartment Pricing Plan

POOL VIEW



1ST FLOOR LAYOUT

POOL VIEW



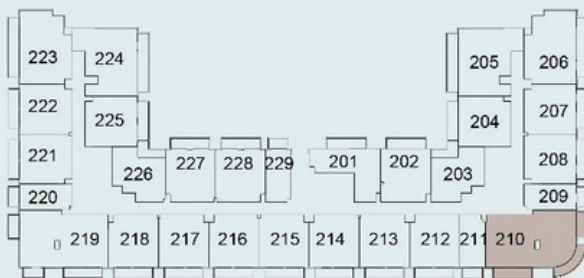
1ST FLOOR LAYOUT

COMMUNITY VIEW

SIDE VIEW

COMMUNITY VIEW

SIDE VIEW



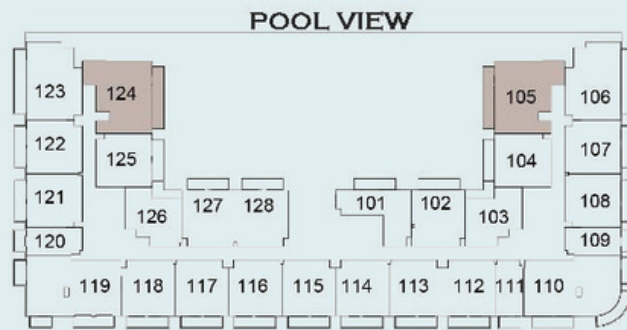
VILLA VIEW

TYPICAL 2ND -4TH FLOOR LAYOUT

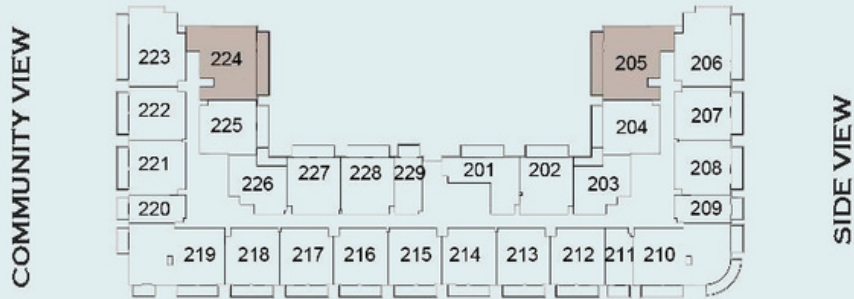


VILLA VIEW

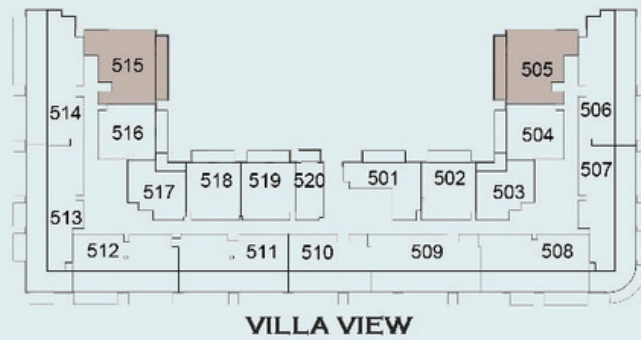
TYPICAL 2ND -4TH FLOOR LAYOUT



**1ST FLOOR LAYOUT**



**TYPICAL 2ND -4TH FLOOR LAYOUT**



**FIFTH FLOOR LAYOUT**

UNIT No.	FLOOR	ROOMS	TYPE	VIEW	APT AREA	BALCONY AREA	TOTAL AREA
105	1	3	3 BHK A	POOL	1011	494	1,504.00
110	1	3	3 BHK B	VILLA	1292	291	1,583.00
119	1	3	3 BHK C	VILLA	1330	232	1,561.00
124	1	3	3 BHK A	POOL	1008	494	1,502.00
205	2	3	3 BHK A	POOL	1011	171	1,182.00
210	2	3	3 BHK B	VILLA	1292	291	1,583.00
219	2	3	3 BHK C	VILLA	1329	232	1,561.00
305	3	3	3 BHK A	POOL	1011	171	1,182.00
310	3	3	3 BHK B	VILLA	1292	291	1,583.00
319	3	3	3 BHK C	VILLA	1329	232	1,561.00
405	4	3	3 BHK A	POOL	1011	171	1,182.00
410	4	3	3 BHK B	VILLA	1292	291	1,583.00
419	4	3	3 BHK C	VILLA	1329	232	1,561.00
424	4	3	3 BHK A	POOL	1008	171	1,179.00

# LIVE AND PAY

Flexible post-handover payment plans to ensure convenience in meeting your financial needs.

20% AT BOOKING

80% AT HANDOVER

Escrow Account Available

- 4% DLD Registration charges (Oqood) to be paid at the time of Booking
- Project Completion (Hand Over) in Dec 2024